

2023年ウォーカーAパターン2395ml-958-40ft



Oil Pattern Distance:	40 Feet	Reverse Brush Drop:	40 Feet	Oil Per Board:	50 uL
Forward Oil Total:	15.45 mL	Reverse Oil Total:	8.5 mL	Volume Oil Total:	23.95 mL
Forward Boards Crossed:	309 Boards	Reverse Boards Crossed:	170 Boards	Total Boards Crossed:	479 Boards

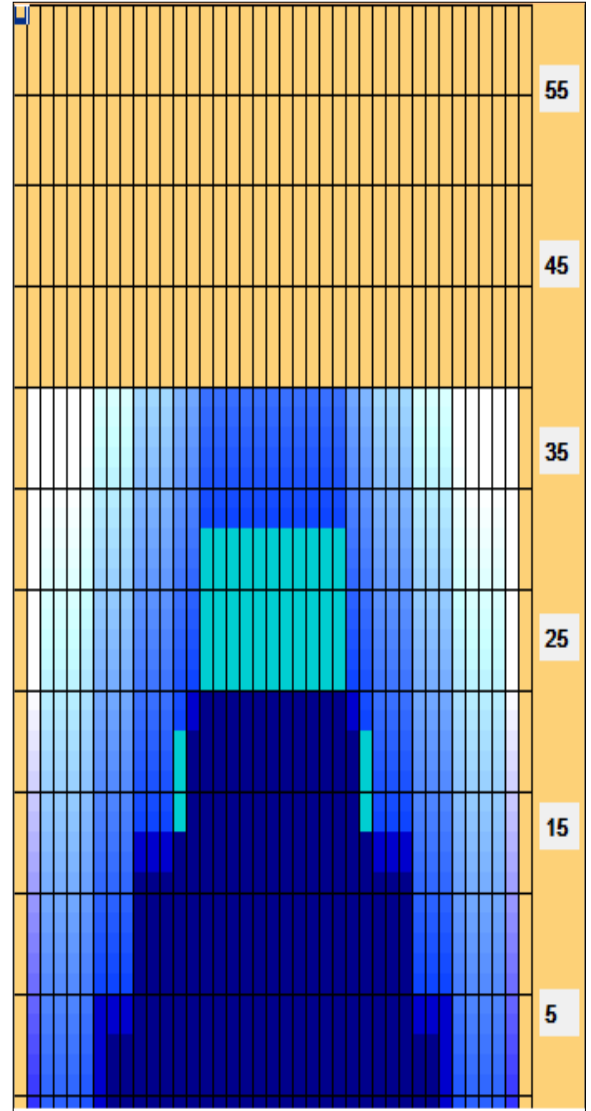
	Start	Stop	Loads	Speed	Crossed	Start	End	Feet	T.Oil
1	3L	3R	1	10	35	0.0	0.0	0.0	1750
2	6L	6R	2	10	58	0.0	2.8	2.8	2900
3	8L	8R	3	14	75	2.8	8.7	5.9	3750
4	10L	10R	3	18	63	8.7	16.3	7.6	3150
5	13L	13R	3	18	45	16.3	23.9	7.6	2250
6	15L	15R	3	22	33	23.9	33.2	9.3	1650
7	2L	2R	0	26	0	33.2	37.0	3.8	0
8	2L	2R	0	30	0	37.0	40.0	3.0	0

	Start	Stop	Loads	Speed	Crossed	Start	End	Feet	T.Oil
1	2L	2R	0	30	0	40.0	25.0	-15.0	0
2	14L	14R	2	26	26	25.0	17.7	-7.3	1300
3	10L	10R	3	18	63	17.7	10.1	-7.6	3150
4	7L	7R	3	10	81	10.1	5.9	-4.2	4050
5	2L	2R	0	10	0	5.9	0.0	-5.9	0

Conditioner:
Type In or Select One

TransferType:
Type In or Select One

- Forward
- Reverse
- Combined
- Buff



Item	3L-7L:18L-18R	8L-12L:18L-18R	13L-17L:18L-18R	18L-18R:17R-13R	18L-18R:12R-8R	18L-18R:7R-3R
Description	Outside Track:Middle	Middle Track:Middle	Inside Track:Middle	Middle: Inside Track	Middle:Middle Track	Middle:Outside Track
Track Zone Ratio	9.58	1.83	1.07	1.07	1.83	9.58

